

THIN FILM VERSATILE PLATFORM

ONLY FROM TES

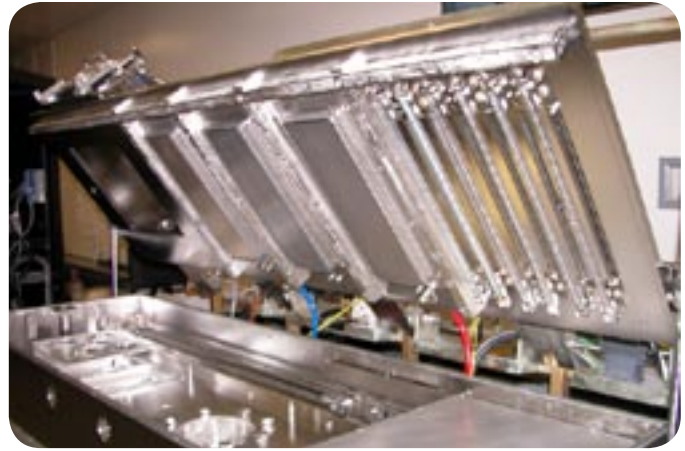


MRC-900 Series

The MRC 900 series features a high rate, sputter down, in line design incorporating a dual load lock with up to three cathodes. Many options are available.

TES has the ability to modify any aspect of our remanufactured process tools to meet individual customers specifications.





www.tescal.com

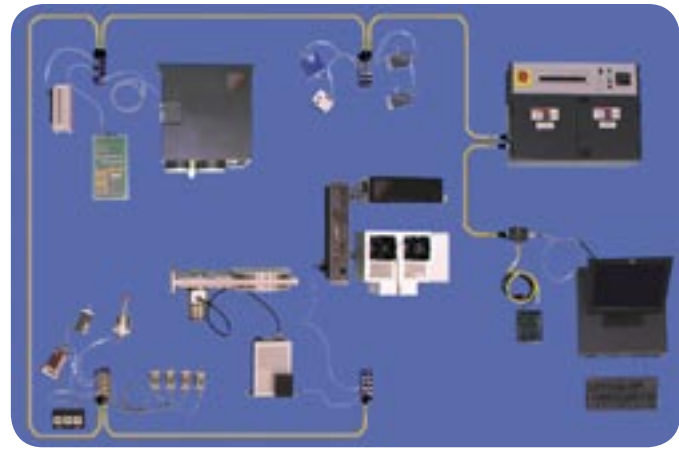
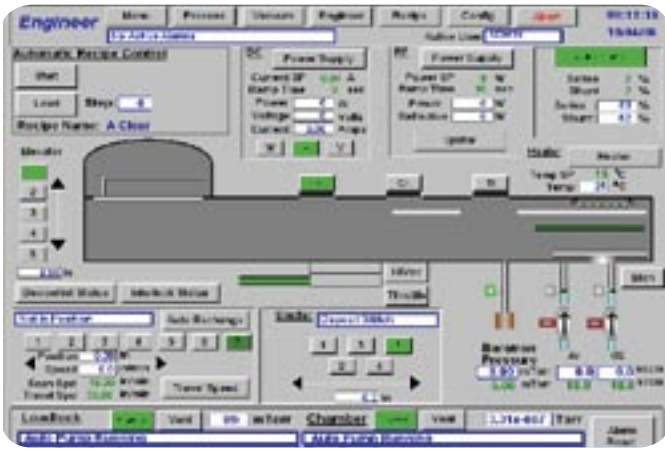


INNOVATIVE FEATURES

MRC-900 SERIES

- Dual level load lock allows simultaneous loading and unloading of one set of substrates while a second set is being coated in the process chamber.
- The pallet and system design allows for production flexibility both in substrate size and shapes, easily permitting process changes and new technologies.
- Pallet size is 13" x 13".
- The multi-pass, bi-directional pallet scanning contributes to higher throughput.
- Advanced Energy solid state RF/DC sputtering power supplies are incorporated into our system design.
- Optional RF etch using Advanced Energy state of the art power supply.
- Optional heat and cyopumping in the load lock is available for rapid out-gassing of substrates and faster pump down improves throughput.
- Optional turbo molecular cryo pumped load lock.
- We use GE Fanuc or Allen Bradley PLC control and support systems, which are conveniently located in a single sealed box. Components are positioned and labeled for serviceability.
- The system accepts up to three cathodes, 4 ^{3/4} x 14 ^{7/8}. Many cathode types are available.





www.tescal.com



COMPREHENSIVE TOOLS

CONTROL PACKAGES / TRAINING

Fully automated control package

- TES has invested in incorporating the Device Net™ protocol in our fully automated system design and developing software that enables us to maximize the efficiency of the DeviceNet™ standard. This technology eliminates wiring, reduced costs and improved noise immunity. DeviceNet™ provides faster data processing, more security in data transmission, superior error checking and greater overall flexibility.
- The Device Net™ digital communication network is used between system components. This single cable, serial communication method simplifies the system design and reduces traditional wiring by over 75 percent. Built-in network diagnostics make troubleshooting, maintenance and upgrades quick and easy, reducing downtime and increasing productivity.

Basic system control package

- The system will be configured with standard components for control and operation such as vacuum gauges, automatic valve sequencer, process pressure control, motion control, etc.
- A standard deposition controller is used for the thermal process.
- The sputtering process automation is achieved using a powerful deposition controller designed specifically to run complex sputtering recipes.
- A two-part training DVD is provided, the first portion of which offers a detailed demonstration of system operation. The maintenance portion of the training DVD provides visual and audio assistance in regular maintenance tasks to assure proper and safe maintenance of the system. The DVD helps to clarify the written instruction and mechanical prints provided in the manual.
- Manuals, documentation, and videos of the system operation and maintenance are available from the system touch screen.





www.tescal.com

MRC-900 SERIES